



# The Bilingual Primary School, Hove

**Client**

The Bilingual Primary School,  
Hove

**Value**

£100,000

**Duration**

7 weeks

## The Brief

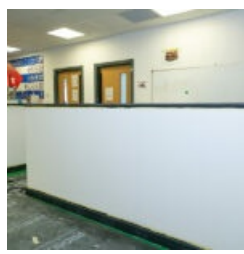
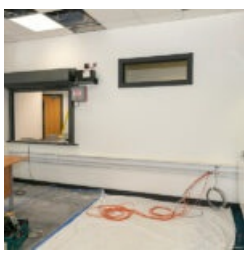
- The remit of this project was to reconfigure the reception area, as well as two classrooms to form new SEN rooms.
- Hawes Construction Group were the main contractor for this project.

## Our Solution

- Upstairs, we divided one classroom in two, to reconfigure the space into two SEN rooms.
- On the ground floor, we reconfigured the reception area and a classroom to form a new meeting room.
- We installed a new external door.
- To avoid disruption to the school's daily operations, we completed the majority of work in the summer holidays.
- Due to a long lead in for the doors and windows, we finished the remainder of the work during half term.
- We also installed a new security shutter on the reception desk.

## The Result

- The client and architect were very pleased with the results of our work.
- We completed the project to budget, with minimal disruption to the school's operations.



View more details online at: <https://www.hawesconstructiongroup.co.uk/project/the-bilingual-primary-school-hove/>



Hawes Building Ltd  
41 High Street,  
Polegate,  
East Sussex BN26 5AB

+44 (0)1323 483085  
+44 (0)7715 078126  
[info@hawesconstructiongroup.co.uk](mailto:info@hawesconstructiongroup.co.uk)